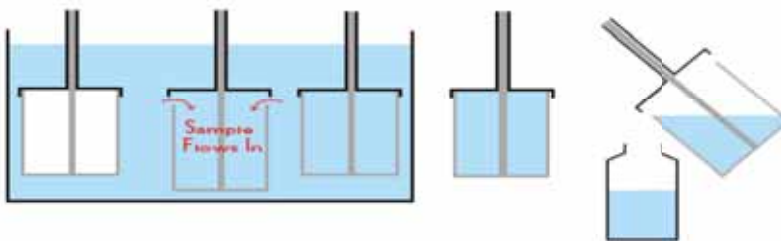


Cup Sampler

Suitable for high and low viscosity liquids and suspensions

An all stainless steel sampler suitable for sampling liquids and suspensions. Discrete samples can be taken from known heights with the product.

- Type: Single Point
Material: 316 stainless steel
- Operation
1. Insert the sampler to the required depth.
 2. Squeeze handle which pushes the cup away from the lid, allowing the liquid to enter the cup.
 3. After filling remove the sampler.
 4. To empty the sampler either tip the sampler whilst squeezing the handle or unscrew the collecting cup.



- (A) T Bar Handle
- (B) Spring
- (C) High polish finish
- (D) Sample Collecting Cup

Right - Sampling Cup
unscrews so it can be
easily cleaned



Part No.	Overall Length	Nominal Cup Volume	Max. Diameter of Cup
5030A-600	600mm	100ml	55mm
5030A-1000	1000mm	100ml	55mm
5030A-1500	1500mm	100ml	55mm
Accessories			
8001N-1100	Narrow Cleaning Brush - 1100mm		
8001N-1600	Narrow Cleaning Brush - 1600mm		
Storage Cases	See page 79		